

Installing ICC PROFILES in Gimp (Ufraw / RawTherapee) on Linux

These instructions assume that you are running Gimp with the Gimp-Ufraw 'plug-in' or RawTherapee installed on a Linux PC.

First create a directory (folder) on your hard disk. Download the profiles you need or create profiles using `dispcalGui` synthetic icc profile creator. `Dispcal` is available in the repositories on most distributions.

A source of downloadable profiles can be found on the Ufraw website:

<http://ufraw.sourceforge.net/Colors.html>

Some are available from camera manufacturers' web sites and others may have been installed by other software. e.g.

`/usr/share/rawtherapee/iccprofiles/input/`

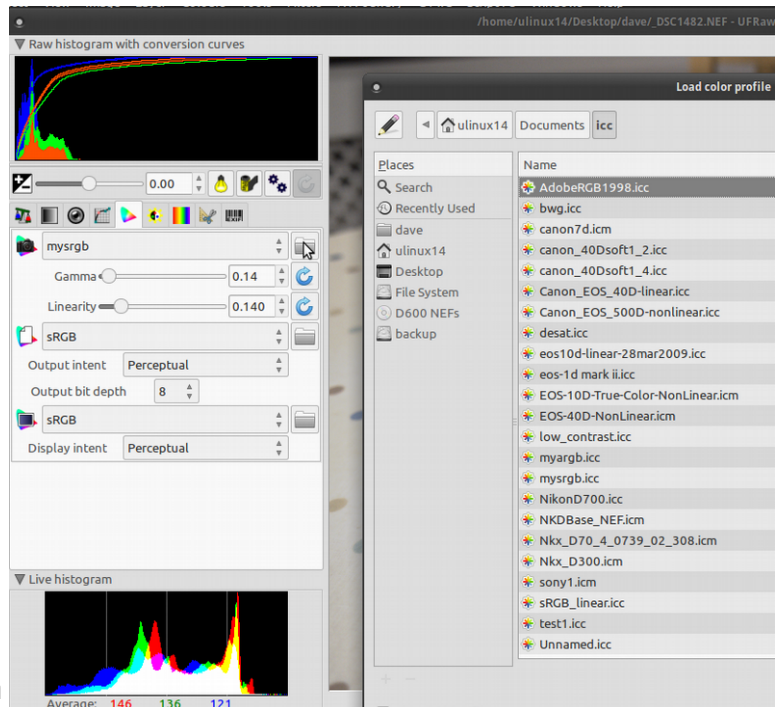
Or download from my site:

<http://www.theuniversody.co.uk/iccprofiles/>

Then copy or save the profiles to that folder.

When opening a raw file through Ufraw / RawTherapee you will be given the option of adding a new profile by clicking on the folder icon next to the current profile or in the colour management section of RawTherapee. Navigate to the place where your profiles are saved (mine are filed in a folder called `icc` inside my Documents folder) and you will see a list of available profiles.

Select the one you wish to use, it will then import it, you only need to do this once, it will remain available in the 'drop down menu'.



Under the profile name on the Ufraw window are two sliders for Gamma and Linearity. If you are using the 'correct profile' for your camera you should not need to adjust them.

If you are using generic or custom profiles these provide a way of correcting the gamma of the image.

In the example shown the default values of G1.0 and L0.10 give an image which is very dark, adjusting them in line with the characteristics of the camera will correct this. This is a better option than using default G. and L. and changing the exposure. The white balance of the image may also need to be corrected.

By default Ufraw will remember the last settings used so when working from a batch of images from the same camera it will open with the last used settings already in place.

For high ISO images you may like to explore the denoise option found under the first tab on Ufraw, also available in RawTherapee. (Setting this also creates a default setting so check this each time so as not to use it on images that do not need it). Gimp 2.18-Ufraw currently works in 8bit. If you wish to work in higher bit depths consider RawTherapee as an image loader for the Gimp 2.10 series.

For high ISO images you may like to explore the denoise option found under the first tab on Ufraw, also available in RawTherapee. (Setting this also creates a default setting so check this each time so as not to use it on images that do not need it). Gimp 2.18-Ufraw currently works in 8bit. If you wish to work in higher bit depths consider RawTherapee as an image loader for the Gimp 2.10 series.